

THE 2017 CROP & LIVESTOCK REPORT

# Sacramento County

**The Hunt for  
Invasive Pests  
Continues!**













...page 14



**New Feature!  
Land Use Maps**  
...page 16



# Contents

	<b>Agricultural Commissioner Letter .....</b>	<b>1</b>
	<b>Agricultural Production Summary .....</b>	<b>2-3</b>
	<b>Field Crops .....</b>	<b>4-5</b>
	<b>Certified Farmers' Markets .....</b>	<b>6</b>
	<b>Fruits, Nuts, &amp; Vegetables .....</b>	<b>7</b>
	<b>Farm Bureau Celebrates 100 Years! .....</b>	<b>8-9</b>
	<b>Nursery, Seed, &amp; Apiary .....</b>	<b>10</b>
	<b>Livestock, Poultry, &amp; Aquaculture .....</b>	<b>11</b>
	<b>Pest Exclusion &amp; Canine Teams .....</b>	<b>12-13</b>
	<b>Pest Detection .....</b>	<b>14</b>
	<b>Weights &amp; Measures and Phytosanitary .....</b>	<b>15</b>
	<b>Land Use .....</b>	<b>16-17</b>

## **AGRICULTURAL COMMISSIONER/SEALER**

Juli D. Jensen

## **CHIEF DEPUTY AG COMMISSIONER/SEALER**

Chris J. Flores

## **DEPUTY AGRICULTURAL COMMISSIONERS**

Diana Acosta (Pesticide Use Enforcement)  
Parminder Malhi (Weights & Measures Programs)  
Kevin Martyn (Agricultural Programs)  
Debbie Thompson (Galt Office)

## **ADMINISTRATIVE SUPPORT**

Teresa Adams, Administrative Svcs Officer II  
Patricia Kirtley, Senior Account Clerk  
Nora Glim, Senior Office Assistant

## **INSPECTORS/BIOLOGISTS**

Rishi Avila, Sr. Ag & Stds Inspector  
Jennifer Berger, Sr. Ag & Stds Inspector (K9 Handler)  
Prabhjot Brar, Sr. Ag & Stds Inspector  
Glorianna Chavez, Ag & Stds Inspector I  
Mariah de Nijs, Sr. Ag & Stds Inspector (K9 Handler)  
Christina Evans, Sr. Ag & Stds Inspector  
Michelle King, Ag & Stds Inspector II  
Randon Krieg, Sr. Ag & Stds Inspector  
Breanne Matsuura, Ag & Stds Inspector II  
Laura McCready, Sr. Ag & Stds Inspector  
Gafar Omar, Sr. Ag & Stds Inspector  
Jason Sanguinetti, Sr. Ag & Stds Inspector  
Danny Sarracino, Sr. Ag & Stds Inspector (Walnut Grove)  
David Smith, Ag & Stds Inspector II  
Karen Vietheer, Sr. Ag & Stds Inspector (Walnut Grove)  
Gerry Zepeda, Sr. Ag & Stds Inspector

## **SENIOR AG & STANDARDS PROGRAM AIDE**

Adrian Ramos

## **\*AG & STANDARDS PROGRAM AIDES**

Levi Bell, Fernando Cabe, Jared Clark, Linda Conrad,  
Melissa Gatlin, Tatum Getty, Nancy Gudeman,  
Minerva Gizman, Ricky Hill, Joshua Kelley,  
Jordyn Luna, Juan Martinez, Erika Morgan,  
Kathleen Peralta, Rachel Schuster, Steven Swisley,  
Angelica Vasquez, Vanessa Vasquez, Joanne Watson

\* List indicates 2018 staff

Photo Credits:  
Laura McCready, Rishi Avila, Chris Flores

Design & Layout:  
Chris Flores, Laura McCready, & Kevin Martyn

Cover:  
Special thanks to Greene & Hemly

Detection Page:  
Photo location courtesy of the California Exposition and State Fair



**Agricultural Commissioner /  
Weights and Measures**

Juli D. Jensen,  
Agricultural Commissioner  
Sealer of Weights and Measures



**Divisions**  
Agriculture  
Weights and Measures

**County of Sacramento**

---

To:	Karen Ross, Secretary	and	The Honorable Board of Supervisors
	California Department of Food and Agriculture		Chair Susan Peters
			District 1 Phil Serna
			District 2 Patrick Kennedy
			District 4 Sue Frost
			District 5 Don Nottoli

---

I am pleased to submit the Sacramento County Annual Crop and Livestock Report for 2017. This report is produced in accordance with Sections 2272 and 2279 of the California Food and Agriculture Code. It includes the acreage, production and gross value of agricultural commodities in Sacramento County as well as the invasive pest activities and our response to those pests. In this report you will find the "farmgate" values which are based upon the most common first point of sale of the commodity. These values are gross values and in no way reflect net income because they do not take into account the various input costs of production, marketing, or transportation over which the producers have no control.

The 2017 farmgate value of \$495,756,000 shows a small decrease of 2.2% from our record high in 2016 of \$507,064,000. This is interesting in that 2017 was a year of above average rainfall that followed five years of significant drought. Although this did not result in an increase in our farmgate value for 2017, it did result in significant recharge of some of our aquifers that had been negatively affected by the five years of drought and this is excellent news for our agriculture as we move forward.

It is also interesting to note that there is no consistent trend in our agricultural commodities this year with just about as many increasing as those decreasing. Wine grapes continue as our top commodity and they saw a decrease of 7.6% or \$14,021,000 in 2017 which would more than cover the overall crop value loss of \$11,308,000. Although our grape acreage was up by about 1,400 acres in 2017, both the yield and price per ton decreased resulting in the overall decrease in total value.

The top ten commodities in Sacramento remain fairly stable with the exception of the tenth position. In 2016 processing tomatoes beat out rice for that position but their reign was short-lived and in 2017 they were replaced by cherries. This is the first time that cherries have appeared in our top ten and they got there by more than doubling their overall value from 2016 to 2017. This significant increase in value is notable because cherry yields are very weather dependent. Rains at the wrong time are devastating to this crop. 2017 was a wet year but the timing of the rains was such that it did not negatively affect the cherry production. Nursery stock continues to gain back the losses that were suffered during the housing downturn. Overall, our top ten commodities increased in value with an increase in 8 out of 10 individual commodities excluding wine grapes and cattle & calves.

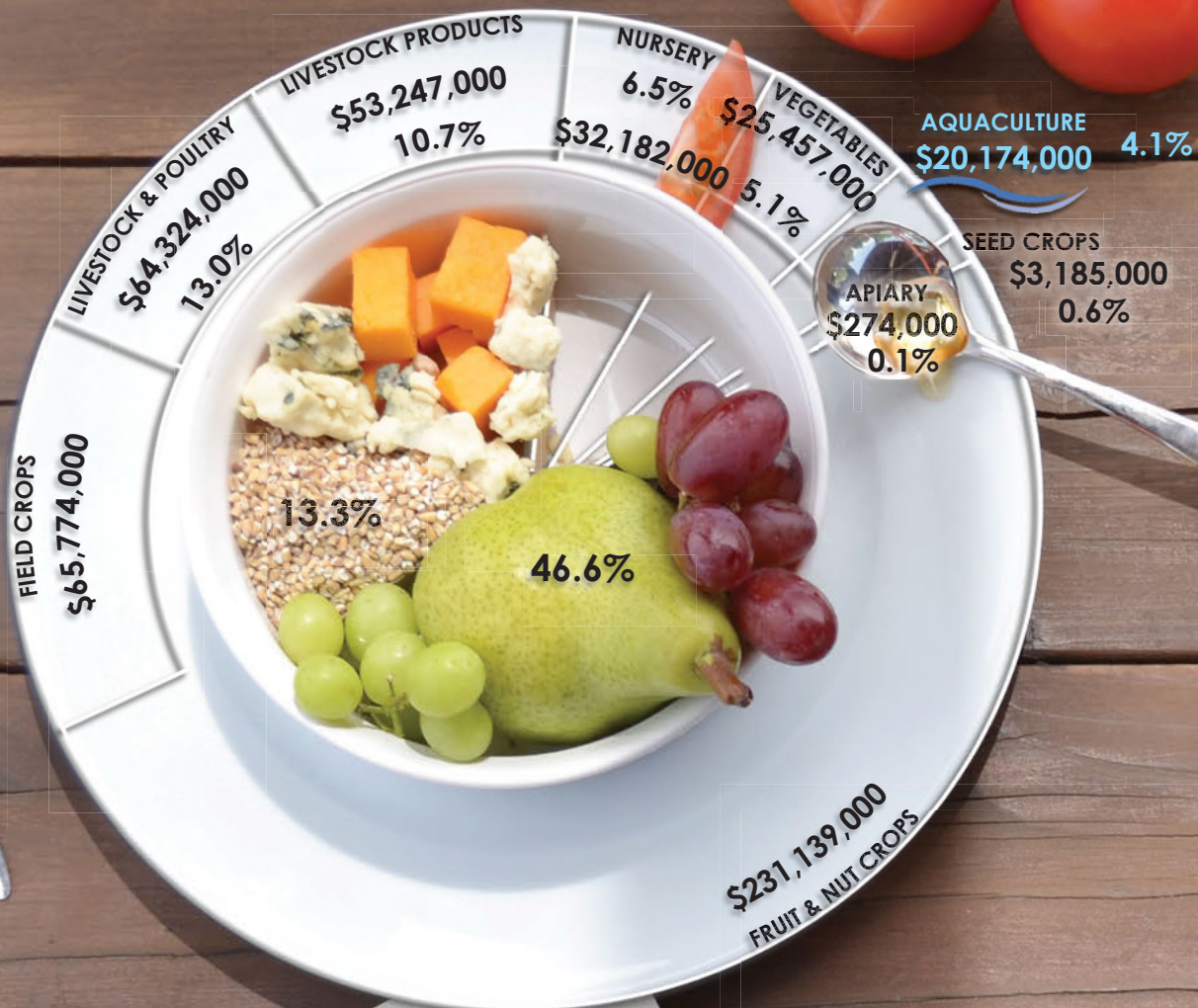
This report would not be possible without the cooperation of our growers, producer organizations, and government agencies that provide the information. I want to thank them for that cooperation. I would also like to recognize and thank our staff members, Laura McCready for collection and compilation of data and Kevin Martyn for creativity and design of the report.

Respectfully submitted,

Juli Jensen  
Agricultural Commissioner



# AGRICULTURAL PRODUCTION SUMMARY



REPORT ON AGRICULTURAL PRODUCTION IN SACRAMENTO COUNTY  
Year 1945  
This report compiled and issued under Section 65.5 of the Agricultural Code of California by A. E. Morrison, Agricultural Commissioner, Sacramento County.  
Summary of Production:

Field crops	\$ 10,328,000
Fruit, Nuts & Berries	9,984,750
Vegetables and Seed	6,928,800
Dairy and Livestock	6,500,000
Poultry, Turkeys & Eggs	3,400,000
<b>TOTAL</b>	<b>\$37,141,550</b>

Crop Acreage by Commodity	
FRUITS - NUTS - BERRIES	
Apples	28
Almonds	2197
Avocado	1
Apricots	298
Berries (Bush)	325
Cherries	467
Figs (Wine)	100
Grapes (Table)	2300
Grapefruit	4500
Nectarines	13
Olives	1824
Oranges	555
Pears	3975
Persimmon	16
Peaches (Freestone)	132
Peaches (Cling)	746
Pecans	68
Pistachio Nuts	1898
Prunes	88
Quinces	38
Strawberries	90
Walnuts	856
VEGETABLES & SEED	
Asparagus	5619
Green Beans	200
Cabbage	275
Cantaloupes	75
Carrots	375
Flower	150
	75
	800
FIELD CROPS	
Hops	150
Grain Sorghum	400
Oats (dry)	1200
Pears (dry)	400
Rice	170
Wheat	140
	2
	2500
	12000
	5000
	300
	3500
	24000



The gross value of all agricultural production in Sacramento County for 2017 is approximately

**\$495,756,000**

...down from \$507,064,000 in 2016.

This represents a decrease of approximately

**▼ 2.2%**



## TOP TEN COMMODITIES

Grapes, Wine	\$170,181,000	▼
Milk (Market)	\$52,127,000	▲
Poultry	\$43,472,000	▲
Pears	\$41,942,000	▲
Nursery Stock	\$32,182,000	▲
Cattle & Calves	\$20,519,000	▼
Aquaculture	\$20,174,000	▲
Hay (Alfalfa)	\$16,191,000	▲
Corn (Field)	\$15,213,000	▲
Cherries	\$10,723,000	▲





## FIELD CROPS

Commodity	Year	Harvested Acres	Per Acre Yield	Total Yield	Unit	Price Per Unit	Total Value
Corn, Field	2017	20,073	5.3	106,387	TON	\$143.00	▲ \$15,213,000
	2016	18,194	5.3	96,428	TON	\$148.10	\$14,281,000
Corn, Silage	2017	7,721	27.2	210,011	TON	\$33.70	▲ \$7,077,000
	2016	6,921	27.0	186,867	TON	\$32.30	\$6,036,000
Hay, Alfalfa	2017	14,622	6.2	90,656	TON	\$178.60	▲ \$16,191,000
	2016	16,391	5.9	96,707	TON	\$138.00	\$13,346,000
Hay, Oat	2017	1,523	2.8	4,264	TON	\$106.00	▼ \$452,000
	2016	3,490	3.6	12,564	TON	\$90.60	\$1,138,000
Hay, Other (Clover, grass, pasture, teff, and wheat hay.)	2017	3,510	2.9	10,179	TON	\$114.20	▲ \$1,162,000
	2016	2,577	2.6	6,700	TON	\$66.20	\$444,000
Oats	2017	2,050	2.3	4,715	TON	\$122.60	▼ \$578,000
	2016	2,621	1.5	3,932	TON	\$184.80	\$727,000
Oat Silage	2017	3,909	11.8	46,126	TON	\$22.90	\$1,056,000
	2016	included in misc. silage...			TON		
Misc. Silage or Greenchop	2017	1,815	10.5	19,058	TON	\$17.80	▼ \$339,000
	2016	3,144	10.3	32,383	TON	\$23.80	\$771,000
Pasture - Irrigated	2017	16,800			ACRE	\$250.00	▲ \$4,200,000
	2016	16,800			ACRE	\$140.00	\$2,352,000



Commodity	Year	Harvested Acres	Per Acre Yield	Total Yield	Unit	Price Per Unit	Total Value
Range	2017	57,860			ACRE	\$35.00	▲ \$2,025,000
	2016	58,800			ACRE	\$25.00	\$1,470,000
Rice	2017	7,300	4.5	32,850	TON	\$294.30	▲ \$9,668,000
	2016	8,840	4.0	35,360	TON	\$236.30	\$8,356,000
Ryegrass	2017	5,105	3.2	16,336	TON	\$130.40	▲ \$2,130,000
	2016	5,282	2.1	11,092	TON	\$67.70	\$751,000
Safflower	2017	3,601	0.8	2,881	TON	\$359.30	▼ \$1,035,000
	2016	4,289	1.2	5,147	TON	\$440.00	\$2,265,000
Sorghum Milo	2017	2,010	2.7	5,427	TON	\$160.00	▼ \$868,000
	2016	2,103	2.8	5,888	TON	\$172.60	\$1,016,000
Sudangrass	2017	included in misc. field...			TON		
	2016	included in misc. field...			TON		
Trificalc	2017	included in misc. field...			TON		
	2016	794	2.6	2,064	TON	\$124.50	\$257,000
Wheat	2017	7,294	2.1	15,317	TON	\$138.70	▼ \$2,125,000
	2016	11,150	3.1	34,565	TON	\$144.60	\$4,998,000
Misc. Field	2017	3,446	Barley, dry beans, hops, sudangrass, & trificalc.				▼ \$1,655,000
	2016	1,710	Barley, dry beans, hops, & sudangrass.				\$1,866,000
Total	2017	158,639					▲ \$65,774,000
	2016	163,106					\$60,074,000





## FRUITS, NUTS, & VEGETABLES

Commodity	Year	Harvested Acreage	Per Acre Yield	Total Yield	Unit	Price Per Unit	Total Value
Corn, Sweet	2017	542	4.4	2,385	TON	\$311.10	▼ \$742,000
	2016	included in miscellaneous...			TON		
Tomatoes, Fresh	2017	included in miscellaneous...			TON		
	2016	included in miscellaneous...			TON		
Tomatoes, Processed	2017	3,070	43.1	132,317	TON	\$72.00	▼ \$9,527,000
	2016	4,594	39.0	179,166	TON	\$72.70	\$13,025,000
Squash	2017	551	14.8	8,155	TON	\$141.10	\$1,151,000
	2016	included in miscellaneous...			TON		
Miscellaneous	2017	2,342	Asparagus, beans, beets, broccoli, carrots, cucumbers, eggplants, gourds, herbs, leafy greens, okra, onions, peas, peppers, potatoes, pumpkins, squash, and tomatoes.				▼ \$14,037,000
	2016	3,414					\$27,437,000
Total	2017	6,505					▼ \$25,457,000
	2016	8,008					\$40,462,000

Commodity	Year	Harvested Acreage	Per Acre Yield	Total Yield	Unit	Price Per Unit	Total Value
Almonds	2017	275	0.4	110	TON	\$4,700.00	\$517,000
	2016	included in miscellaneous...			TON		
Apples	2017	included in miscellaneous...			TON		
	2016	573	12.6	7,220	TON	\$354.30	\$2,558,000
Cherries	2017	1,188	2.9	3,445	TON	\$3,112.70	▲ \$10,723,000
	2016	1,221	1.6	1,954	TON	\$2,732.90	\$5,340,000
Grapes, Wine	2017	35,293	7.8	275,285	TON	\$618.20	▼ \$170,181,000
	2016	33,866	8.5	287,861	TON	\$639.90	\$184,202,000
Pears	2017	5,068	20.5	103,894	TON	\$403.70	▲ \$41,942,000
	2016	5,072	17.2	87,238	TON	\$472.60	\$41,229,000
Strawberries	2017	68	5.3	360	TON	\$5,394.30	▼ \$1,942,000
	2016	94	3.9	367	TON	\$5,340.00	\$1,960,000
Walnuts	2017	1,116	1.1	1,228	TON	\$1,766.80	▼ \$2,170,000
	2016	858	1.7	1,459	TON	\$1,671.60	\$2,439,000
Miscellaneous	2017	373	Apples, apricots, blackberries, blueberries, chestnuts, citrus, figs, kiwis, melons, neclarines, olives, peaches, plums, pomegranates, table grapes, and watermelons.				▼ \$3,664,000
	2016	812					\$5,665,000
Total	2017	43,381					▼ \$231,139,000
	2016	42,496					\$243,393,000



# CERTIFIED FARMERS MARKETS



	Jan	Feb	Mar	Apr	May	Jun	Jul	Aug	Sept	Oct	Nov	Dec
Carmichael Park	9:00am-2:00pm 5750 Grant Avenue, Carmichael, 95609											
Central	8:00am-12:00pm State Parking Lots under 80/50 freeway, 800 W St., Sacramento, 95818											
Healthy Living	7:30am-12:00pm 1225 Grand Ave., Sacramento, 95838											
Old Town Elk Grove	8:00am-1:00pm Old Town Elk Grove Plaza, 9615 Railroad Ave., Elk Grove, 95624											
Kaiser Point West	9:30am-2:00pm 1650 Response Rd, Sacramento, 95815											
Fremont Park	10:00am-1:30pm 15th & P Street, Sacramento, 95814											
Roosevelt Park	10:00am-1:30pm 940 P St., Sacramento, 95814											
Chavez Plaza	10:00am-1:30pm 950 J St., Sacramento, 95814											
VA Mather	9:00am-1:00pm 10985 Hospital Way, Mather, 95655											
UC Davis Med Center	3:00pm-7:00pm 4610 X St., Sacramento, 95817											
Fair Oaks Sunset	3:00pm-7:00pm 8101 Sunset Ave., Sacramento, 95628											
Goethe Loop	8:00am-12:00pm 10060 Goethe Rd., Sacramento, 95827											
Capital Mall	10:00am-1:30pm 600 Capitol Mall, Sacramento, 95814											
Florin Sears	8:00am-12:00pm Sears Parking Lot, 5901 Florin Rd., Sacramento, 95823											
Orangevale	4:00pm-8:00pm 9295 Greenback Lane, Orangevale, 95662											
Kaiser Morse	9:30am-2:00pm 2025 Morse Avenue, Sacramento, 95815											
Valley Mack	9:30am-1:30pm 6700 Mack Rd., Sacramento, 95823											
Natomas Regional Park	8:00am-12:00pm 2501 New Market Dr., Sacramento, 95835											
Country Club Plaza	8:00am-12:00pm East Mall Parking Lot, 2400 Butano Dr., Sacramento, 95825											
Sunrise Mall	8:00am-1:00pm 6196 Sunrise Blvd., Citrus Heights, 95610											
Historic Folsom	8:00am-1:00pm Historic Folsom Plaza, 915 Sutter Street, Folsom, 95630											
Laguna/Elk Grove	8:00am-12:00pm 8245 Laguna Blvd., Elk Grove, 95758											
Midtown	8:00am-1:00pm 20th Street between J&K Streets, Sacramento, 95811											
Oak Park	9:00am-1:00pm 3500 5th Ave., Sacramento, 95817											
Sunrise Light Rail	8:00am-12:00pm 11164 Folsom Blvd, Rancho Cordova, 95742											

Sunday
Monday
Tuesday
Wednesday
Thursday
Friday
Saturday





Farm Bureau's roots in Sacramento County began over 100 years ago when a group of farmers and business owners sought to bring a farm advisor and educational programming to Sacramento County. With the passing of the Smith-Lever Act in 1914, the Agricultural Extension program offered these services to a county, if they had an established farm organization. Thus, County Farm Bureau's began organizing throughout California.

**Sacramento Farmer  
Desires Farm Adviser**  
Believes County Would Profit  
With Farm Bureau.

The Sacramento County Farm Bureau was organized in December of 1916, with an initial membership of 350, representing 11 farm centers in Galt, Elk Grove, Cosumnes, Elverta, Rio Linda, Arcade, Carmichael Colony, Fair Oaks, Orangevale, Courtland and Sacramento. W.R. Klink, a prominent rancher in Galt, was unanimously elected as the new organization's President. Membership was voluntary and open to any resident of Sacramento County interested and willing to aid in the agricultural and general development, regardless of whether they were involved in production farming or not.

In the early 1920s, Farm Bureau's initial work centered around agriculture education,

with efforts to ensure there was an agricultural instructor in every high school within Sacramento County. In addition, much of those early decades were spent on marketing efforts to increase the prices and marketability for various commodities throughout the area. Farm Bureau served as an information center for farmers and industry professionals to work together to achieve common goals. Directors worked to diversify the membership to represent all sectors of agriculture, including separating vegetables into individual commodities.

Throughout the latter part of the 20th century, Farm Bureau focused on services that could be provided to members at discounted rates. Through insurance programs and supply

# 100

## SACRAMENTO



# CULTIVATING THE



Past President Jim Vietheer is accepting a Assembly Resolution from Asm. Jim Cooper and Asm. Ken Cooley recognizing Sacramento County Farm Bureau's 100 year Centennial.



100 YEARS  
TO COUNTY



1930 Farm Bureau Annual Meeting.

THE NEXT CENTURY

companies, Farm Bureau became the primary source for farmers and their business needs. At every level of Farm Bureau, political advocacy remained a top priority, with numerous comments and letter campaigns submitted on behalf of members regarding local, state and federal politics. Through the decades, Farm Bureau has worked tirelessly in the areas of land use management, air quality, open space preservation, water availability, animal welfare and many other areas important to farmers and ranchers.

The organization has worked closely with local and county govern-

ments, government agencies and non-profit groups to enhance the agricultural industry and its impact on the local and regional economies. Their long list of

accomplishments includes the preservation of the Williamson Act program, protection of career technical education and agriculture incentive grant program funding, drafting and implementation of a sound agriculture section in the County General Plan and have successfully defended unnecessary urban sprawl in our rural communities. Sacramento County Farm Bureau is proud to be the recipient of many State Assembly, State Senate and Board of Supervisor Resolutions highlighting the diligent work the organization has done on behalf of farmers and ranchers and are a proud member of the California Agricultural Heritage Club of the California State Fair. On March 11, 2017, the Sacramento County Farm Bureau celebrated its 100 year anniversary! Over 500 members attended the event, along with local and State government representatives. Charlotte Mitchell, Executive Director of the Farm Bureau from 2006-2017, was honored for her unfaltering dedication and passion for Sacramento County agriculture. Throughout the past 100 years, the agricultural landscape has greatly changed within the county, but Farm Bureau's mission has been steadfast. Today, their membership is over 1,500 ranging from production agriculturalists to hobby farmers and rural residents to urban members who understand the importance of agriculture to their everyday lives.

Sacramento County Farm Bureau remains committed to preserving the working landscape of Sacramento county, protecting the rich agricultural lands and promoting the importance of agriculture throughout the community.

- Courtesy Lindsey Liebig,  
Executive Director,

Sacramento County Farm Bureau



CFBF President Jamie Johansson presenting past Executive Director Charlotte Mitchell with a Certification of Recognition for her years of service to Sacramento County Farm Bureau.





## SEED PRODUCTION, APIARY, & NURSERY STOCK

Commodity	Year	Harvested Acreage	Per Acre Yield	Total Yield	Unit	Price Per Unit	Total Value
Clover	2017	688	360.0	247,700	LB	2.15	▼ \$533,000
	2016	1,382	405.0	559,700	LB	2.15	\$1,203,000
Sudan	2017	742	2840.0	2,107,300	LB	0.40	\$843,000
	2016	included in miscellaneous...			LB		
Miscellaneous	2017	747	Barley, cucumber, onion, pumpkin, squash, sunflower, and watermelon.				▼ \$1,809,000
	2016	1,610					\$5,937,000
Total	2017	2,177					▼ \$3,185,000
	2016	2,992					\$7,140,000

		Total Value
2017	Honey and pollination	▲ \$274,000
2016	Honey and pollination	\$116,000



Commodity	Year	Harvested Acreage	Per Acre Yield	Total Yield	Unit	Price Per Unit	Total Value
Nursery Stock	2017	547	Ornamental trees and shrubs, christmas trees, and turf grass.				▲ \$32,182,000
	2016	563					\$30,702,000



# LIVESTOCK & POULTRY



Commodity	Year	No. of Head	Liveweight	Unit	Price Per Unit	Total Value
Cattle & Calves	2017	28,097	170,919	CWT	\$120.05	▼ \$20,519,000
	2016	26,143	133,764	CWT	\$161.74	\$21,635,000
Aquaculture	2017	Bass, catfish, carp, crayfish, sturgeon and caviar.				▲ \$20,174,000
	2016					\$16,576,000
Poultry	2017	Chickens and turkeys.				▲ \$43,472,000
	2016					\$36,813,000
Livestock, Other	2017	Goats, hogs, and sheep.				▲ \$333,000
	2016					\$185,000
Total	2017					▲ \$84,498,000
	2016					\$75,209,000

Commodity	Year	Production		Unit	Price Per Unit	Total Value
Milk-Market	2017	3,134,541		CWT	\$16.63	▲ \$52,127,000
	2016	3,204,267		CWT	\$15.26	\$48,897,000
Milk-Manufactured	2017	2,442		CWT	\$18.43	▲ \$45,000
	2016	0		CWT		\$0
Miscellaneous	2017	Poultry manure and wool.				▼ \$1,075,000
	2016					\$1,076,000
Total	2017					▲ \$53,247,000
	2016					\$49,973,000





## PEST EXCLUSION / K-9 TEAMS



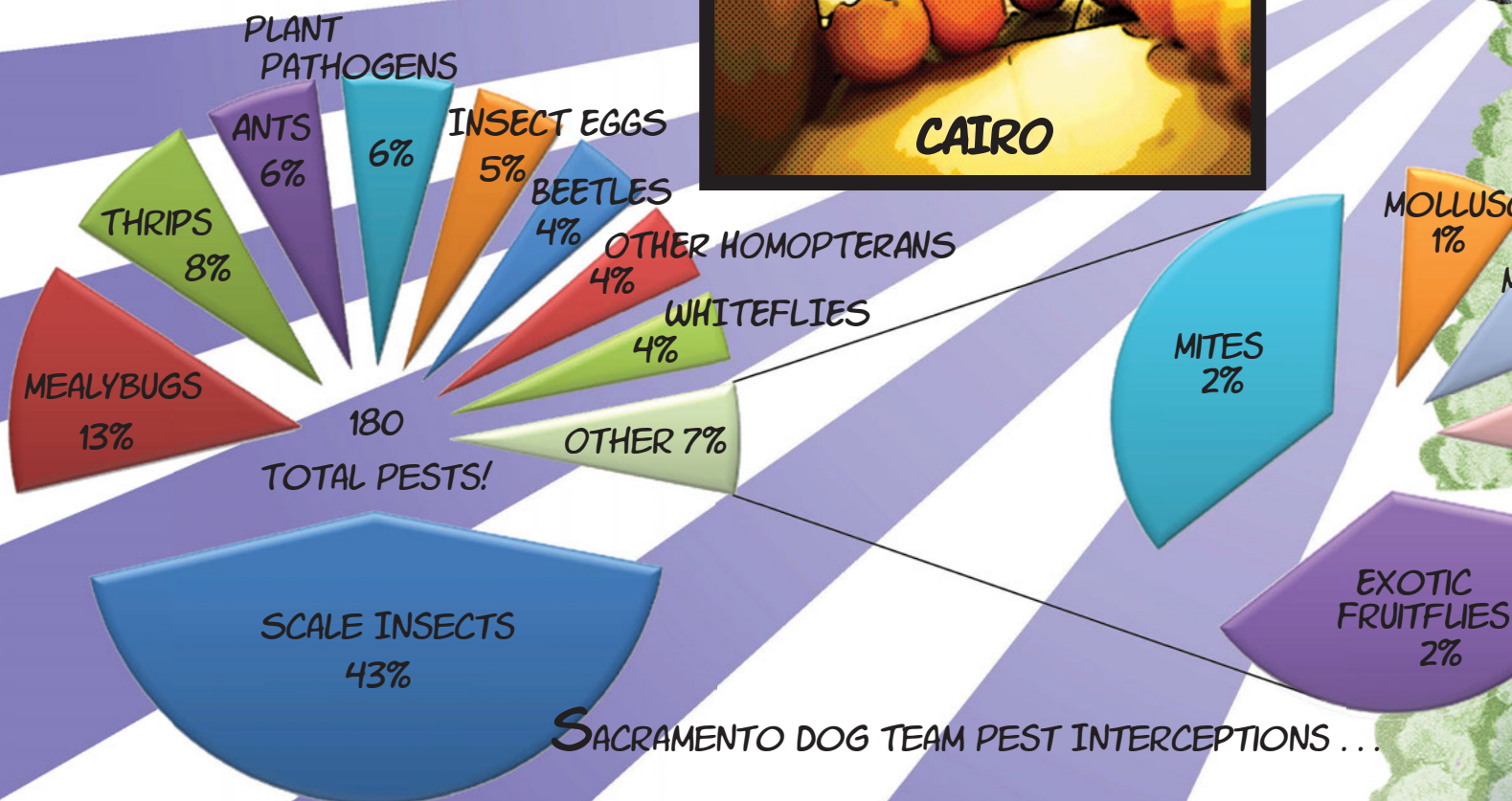
**DOZER**

DOZER HAS BEEN PROTECTING CALIFORNIA FOR YEARS ! ... AND HE RETIRED IN 2017 !!! WHO WILL BE THE NEXT HERO, CAIRO, STAND UP TO THE ONSLAUGHT ?

**INTRODUCING OUR NEW GUARDIAN...**



**CAIRO**





FROM INVASIVE PESTS FOR OVER 6  
WILL TAKE HIS PLACE TO HELP OUR  
/

## SHIPMENTS INSPECTED / PEST INTERCEPTIONS BY SACRAMENTO COUNTY BIOLOGISTS...

AIR FREIGHT: 183 / 29

TRUCK + PARCEL  
FACILITIES: 4,101 / 30

RAILROAD: 103 / 0

GWSS BLUE TAGS: 1,566 / 0

GYPSY MOTH: 20 / 0



# ETI!



CS

MOths  
1%

PSYLLIDS  
1%





## PEST DETECTION



**Asian Citrus Psyllid Traps**  
6,742 servicings in 2017

**Champ (rural) - Exotic Fruit Fly Traps**  
53 servicings in 2017

**European Grapevine Moth Traps**  
11,343 servicings in 2017

**Glassy-Winged Sharpshooter Nursery Traps**  
8,761 servicings in 2017

**Glassy-Winged Sharpshooter Urban Traps**  
18,000 servicings in 2017

**Gypsy Moth Traps**  
3,272 servicings in 2017

**Japanese Beetle Traps**  
2,411 servicings in 2017

**Light Brown Apple Moth**  
4,532 servicings in 2017

**McPhail - Exotic Fruit Fly Traps**  
11,318 servicings in 2017

**Medfly Traps**  
13,951 servicings in 2017

**Melon Fruit Fly Traps**  
4,882 servicings in 2017

**Oriental Fruit Fly Traps**  
6,177 servicings in 2017







## Top 5 Certified Exports\*

Representing over 70 countries...

Commodity	# Certs Issued	Pounds
Almonds	2,773	131,940,000
Walnuts	366	15,099,000
Pecans	91	4,336,000
Yams	16	2,321,000
Pears	93	1,885,000

\* by certificates issued and weight

## WEIGHTS & MEASURES

### Device Inspection

**94%**  
Device  
Compliance

Weighing Devices	Inspected
Computing/Counter/Hanging Scales	2,769
Vehicle Scales	128
Dormant/Platform Scales	581
Livestock Scales	36
Jeweler Scales	47
Miscellaneous	31

Measuring Devices	Inspected
Retail Fuel Meters	8,529
Retail Water Meters	181
Taxi Meters	289
LPG Meters	155
Vapor/Water/Electric Submeters	2,461
Miscellaneous	78

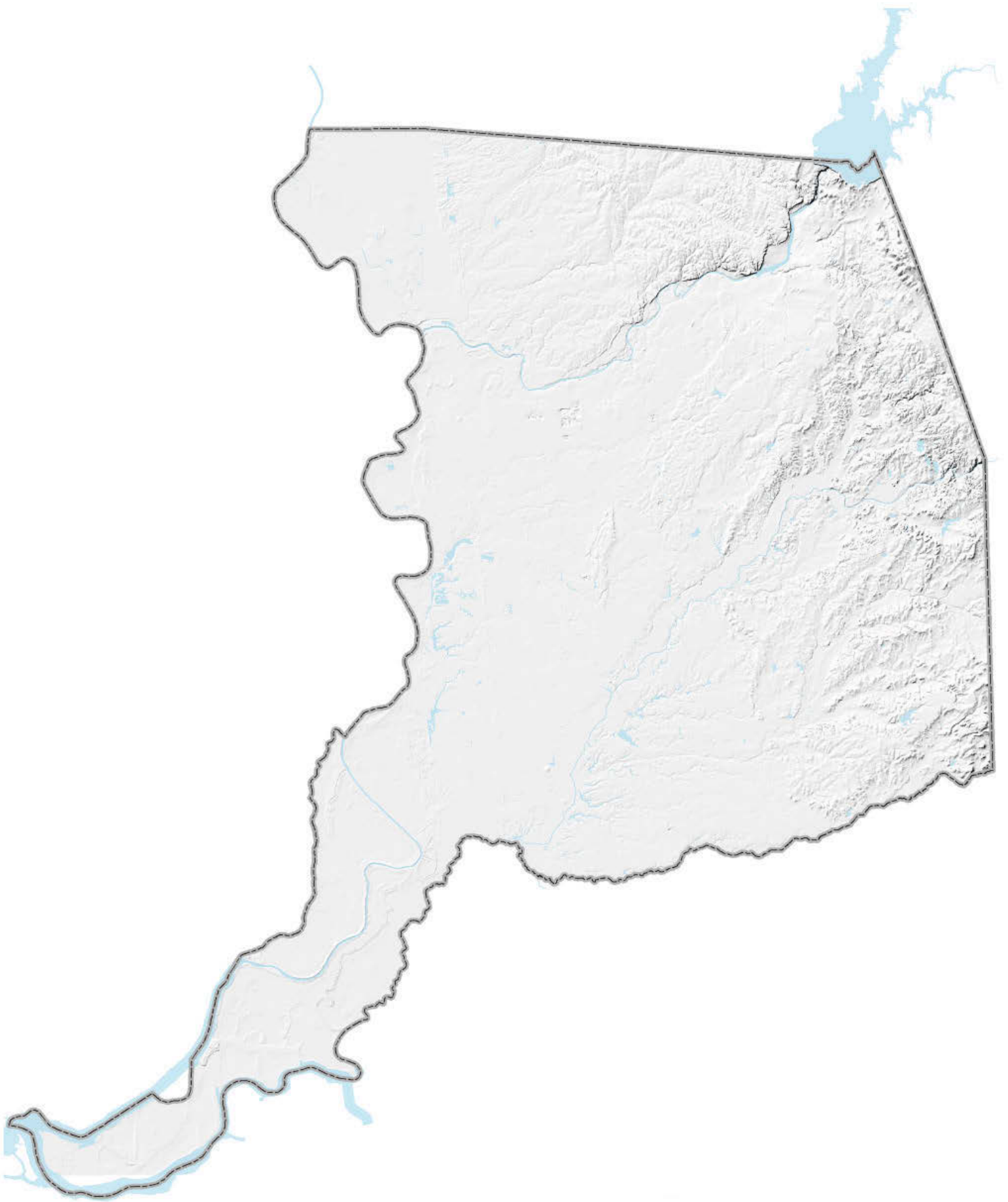
### Price Verification

**1,826**  
Locations  
Inspected

**17% of inspections  
had overcharges**

**30,852**  
Products  
Inspected





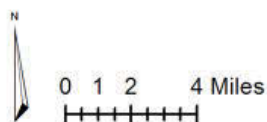
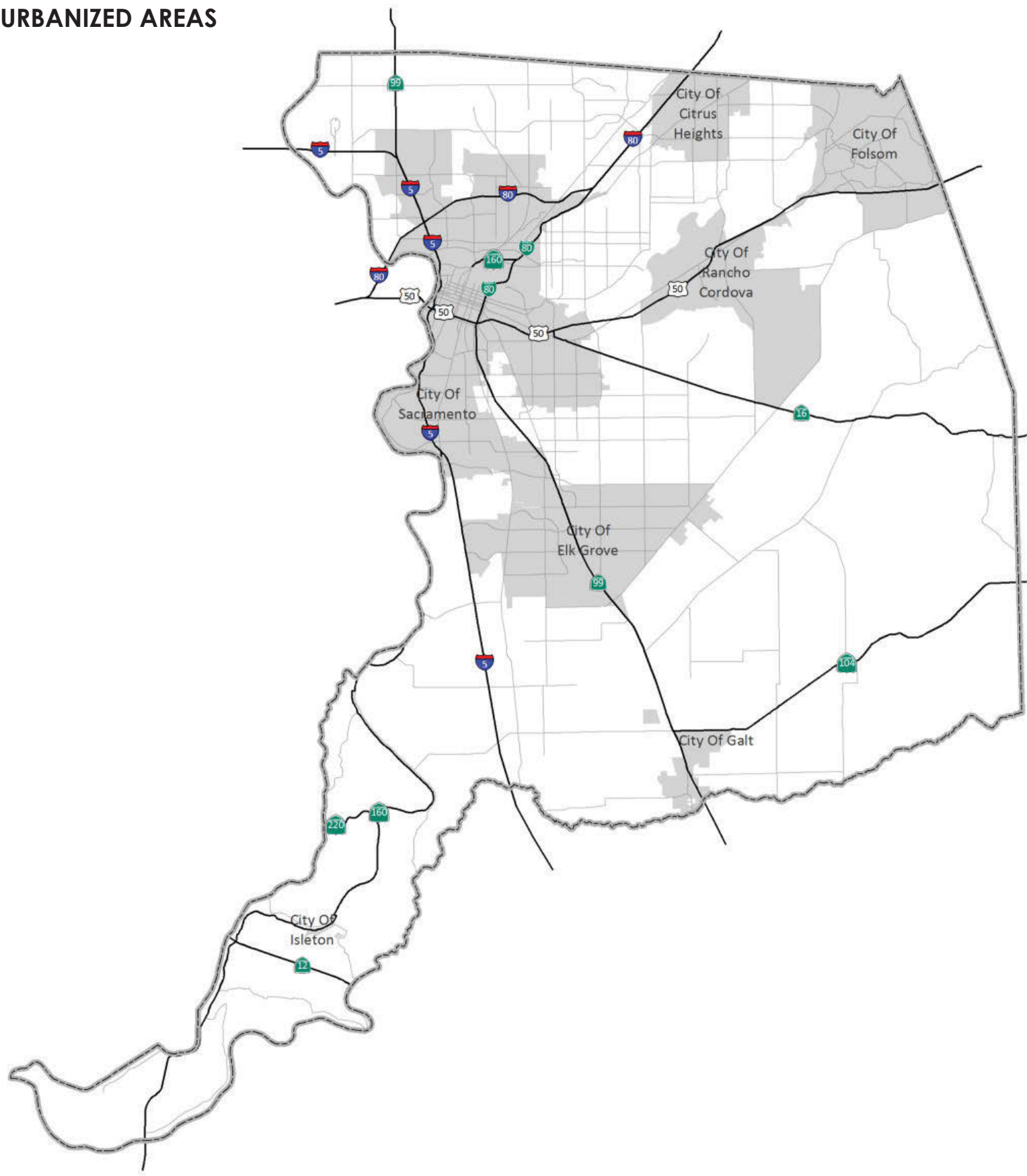
0 1 2 4 Miles  
|-----|-----|-----|-----|







URBANIZED AREAS

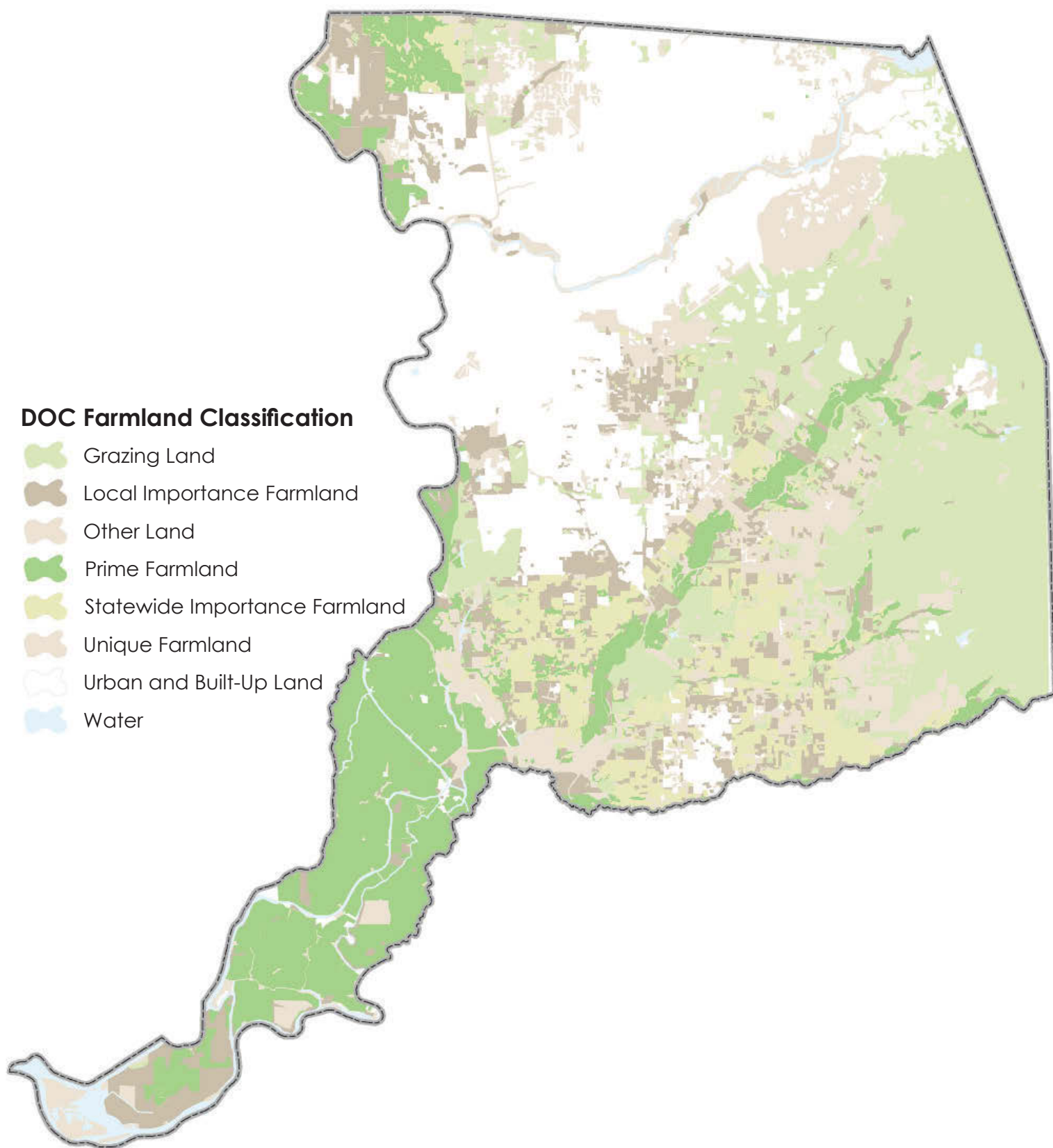








## DEPARTMENT OF CONSERVATION (DOC) FARMLAND CLASSIFICATION

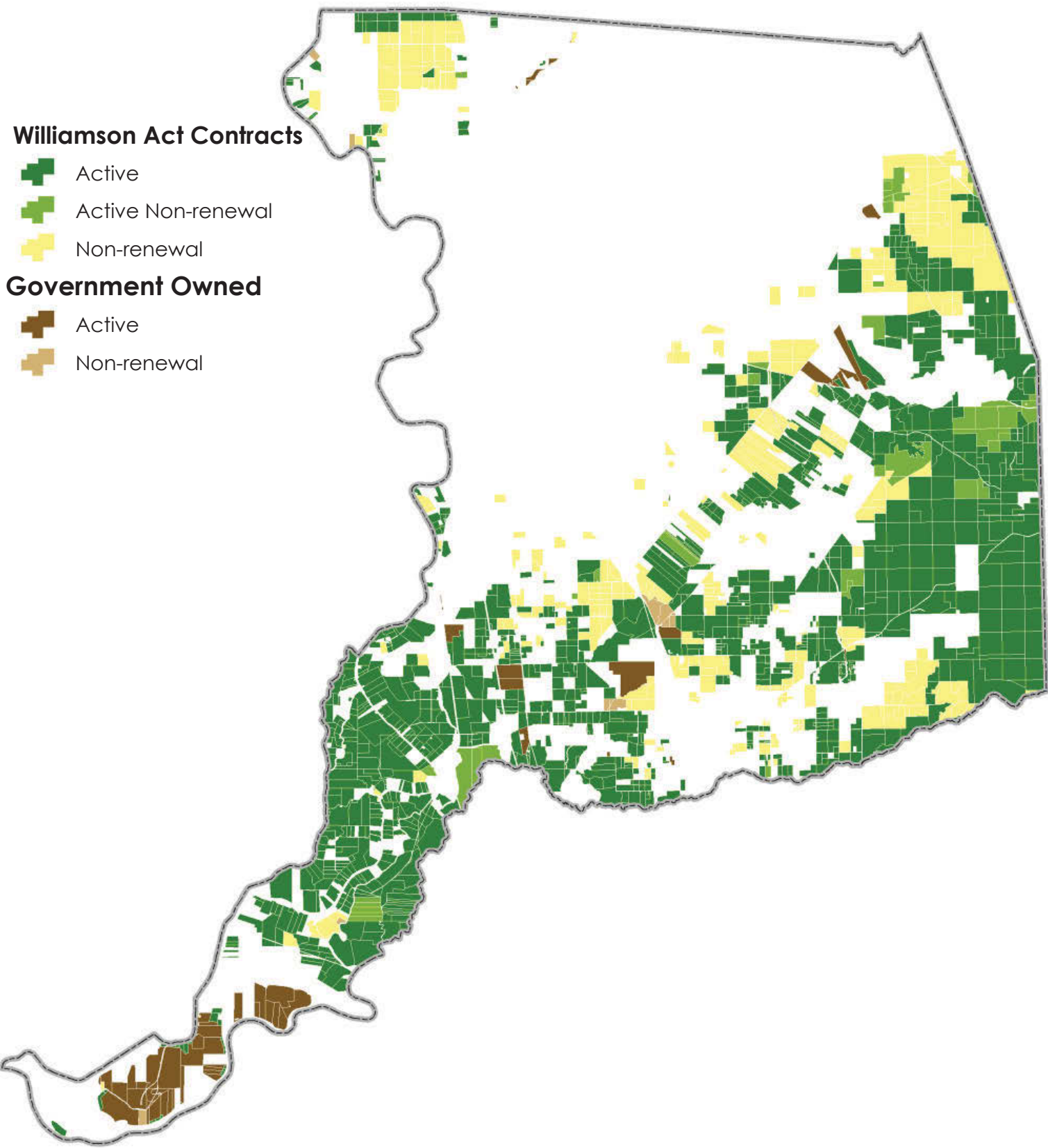








WILLIAMSON ACT CONTRACTS











**Walnut Grove Office**  
14177 Market Street  
Walnut Grove, CA 95690  
(916) 776-1400

**Sacramento Office**  
4137 Branch Center Road  
Sacramento, CA 95827  
(916) 875-6603

**Galt Office**  
425 Pine Street, Suite 1-C  
Galt, CA 95632  
(209) 745-4109